



FAMILIA

MODULOS LED IP67
ILUMINACION DE LETRAS
&
CAJONES DE LUZ

FICHA DE PRODUCTO

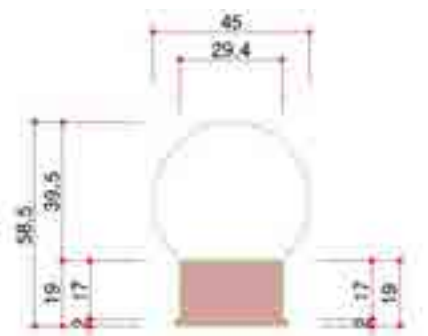
DTSA

LED USO INTERIOR /EXTERIOR EFECTO BOMBILLA DIRECTO 230VAC

LED BALL LAMP



DIBUJO TÉCNICO



Size : 45(L)x29(W)x60(H)mm

- Decoracion Outdoor & Indoor
- High CRI: above 80
- Long Life Span(40,000hrs)
- Outdoor use with IP65
- Max. 800pcs in series with 230VAC

ESPECIFICACIONES TÉCNICAS

Model (Model No.)	Size(mm)	Power Con.	Input Vol.	CCT	Lum. Flux	IP	CRI	Beam Angle	Module Pitch	Package
LED BALL	45mm(L) x 29mm(W) x 60mm(H)	1.5W	230VAC	3000K	58lm	IP65	Ra80	300°	230mm	50pcs in 1 reel / 200pcs in 1 box

Operating Temp. : -20°C--+50 °C

FICHA DE PRODUCTO

DTSA MODULO 3LED LENTES 170° IP67

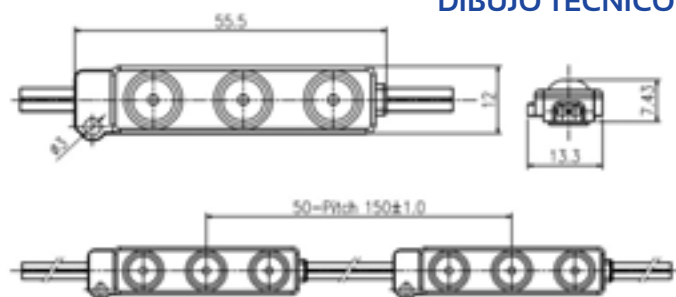
USO IDONEO PARA ILUMINACION DE CAJONES DE LUZ O LETRAS DE TAMALO PEQUEÑO / MEDIANO



REF: F-LED 333MX



DIBUJO TÉCNICO



Size : 55.5(L) x 13.3(W) x 7.4(H)mm

H-LED 333 is the best and cost effective LED lighting Solution For Small or Medium size of channel letters and boxes.

SLIM
IP 67
170°
W,R,G,B
50,000H LIFE TIME
12VDC
EASY APPLICATION
5 YEARS WARRANTY

ESPECIFICACIONES TÉCNICAS

Model (Model No.)	Input Vol.	Power Con.	CCT	Beam angle	CRI	Lum. Flux	Lum. Efficacy	Module No. per a pack
H-LED 333 MX6500K (BFL333 -DW12)	12VDC	0.66W	6500K	170 °	Ra80	66 lm	100 lm/W	
H-LED 333MX 3000K (BFL333 -DL12)	12VDC	0.66W	3000K	170 °	Ra80	60 lm	91 lm/W	50modules (7.5m)
H-LED 333MX RED (BFL333 -DR12)	12VDC	0.66W	625nm	170 °		21 lm		Module pitch 150mm
H-LED 333MX GREEN (BFL333 -DG12)	12VDC	0.66W	525nm	170 °		35 lm		
H-LED 333MX BLUE (BFL333 -DB12)	12VDC	0.66W	465nm	170 °		12 lm		

FICHA DE PRODUCTO

DTSA MODULO 366MX LENTES 170°

Rendimiento 100 lumenes por unid.

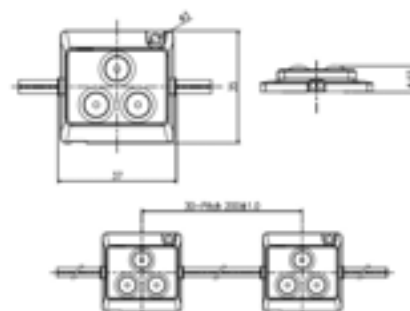
USO IDONEO PARA LA ILUMINACION DE LETRAS O CAJONES DE LUZ DE TAMAÑO MEDIANO /GRANDE CON FONDOS SUPERIORES A 12CM



H-LED 366MX



DIBUJO TÉCNICO



Size : 37(L) x 35(W) x 8.08(H)mm

H-LED 366 is the best and cost effective LED lighting Solution For Medium or Large size of channel letters and boxes.

SLIM

IP 67

160°

**50,000H
LIFE TIME**

12VDC

**5 YEARS
WARRANTY**

ESPECIFICACIONES TÉCNICAS

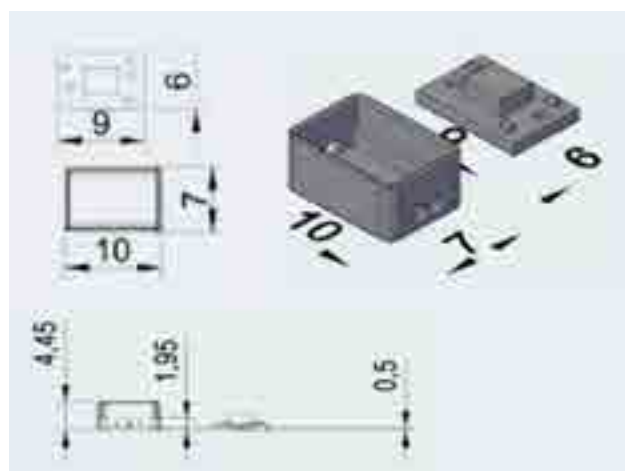
Model (Model No.)	Input Vol.	Power Con.	CCT	Beam angle	CRI	Lum. Flux	Lum. Efficacy	Module No. per a pack
H-LED 366MX 6500K (BFL366 -DW12)	12VDC	1W	6500K	170 °	Ra80	100 lm	100 lm/W	30modules (6m)
H-LED 366MX Red (BFL366 -DR12)	12VDC	0.66W	625nm	170 °		23 lm		Module pitch 200mm

Operating Temp. : -20°C--+70 °C

FICHA DE PRODUCTO

DTSA MICRO MODULO 120° IP67 IDEAL PARA LETRAS PEQUEÑAS O MUY PEQUEÑAS

MICRO MODULO OZ1



Size : 11(L) x 7(W) x 4.45(H)mm

Pitch(Distance between each module): 35mm
Customized Pitch is available

Operating Temp. : -30° ~+70°

ESPECIFICACIONES

Model	Input Vol.	Beam Angle	Power Con.	Current	Lum. Flux	Lum. Efficacy	CCT	IP	CRI
Z1U	12VDC	120°	0.24W	0.02A	20lm	83lm/W	3000K/6500K/10000K	68	Ra80°

CARACTERÍSTICAS TÉCNICAS

- Tamaño muy reducido
- Patented LED module case
- Long Life time (More than 50,000hrs at L70)
- Facil instalación y mantenimiento
- 100% waterproof (IP68)
- Safety Operation with DC12V
- 3 años de garantía
- White(6500K, 10000K), Warm White(3000K)

APLICACIONES

- Aplicacione para Rotulo (especial para fondos de caja o letra reducidos desde 30-80mm)
- Indoor & Outdoor lighting decorations

PACKAGING



100pcs



FICHA DE PRODUCTO

DTSA MICRO MODULO LENTES 160° IDEAL PARA LETRAS PEQUEÑAS O MUY PEQUEÑAS

Módulo Ref OZIU



Medida: 11(L) x 7(W) x 4.45(H)mm
Distancia entre módulos: 35mm

CARACTERÍSTICAS

- Compact Size
- Patented LED module case
- Substitute LED BAR
- Long Life time
(More than 50,000hrs at L70)
- Easy installation and maintenance
- 100% waterproof (IP68)
- Safety Operation with DC12V
- 3 years warranty
- White(6500K), Warm White(3000K)

APLICACIONES

- Sign applications
(smaller depth channel
letters and boxes like
30~80mm)
- Indoor & Outdoor lighting
decorations

PACKAGING

470m x 320mm x 330mm
Weight: 13kg

- 1 rollo 200pcs
- 1 bolsa 1.000pcs
- Caja 2.000pcs
- Caja ext. 12.000pcs



ESPECIFICACIONES

Operating Temp. :-30° ~+70°

Input Vol.	Beam Angle	Power Con.	Current	Lum Flux	Lum Efficacy	CCT	IP	CRI
12VDC	160°	0.24W	0.02A	20lm	83 lm/W	3000K/6500K	68	Ra80°

FICHA DE PRODUCTO

DTSA MODULO RGB IP67 LENTES DE 150° CONSUMO DE 0,72W/12V

REF: 10Z-Z3303-RGB



Size : 72(L) x 18(W) x 8.1(H)mm
Pitch(Distance between each module): 170mm
Customized Pitch is available

DATOS TÉCNICOS

- Reverse voltage protection circuit
- Wide Beam Angle 160°
- 0,72W/12V MODULO
- Built in Lens type
- Long Life time (More than 50,000hrs at L70)
- Easy installation and maintenance
- 100% waterproof (IP68)
- Safety Operation with DC12V
- 3 years warranty
- R G B Color Change

APLICACIONES

- Sign applications
(smaller depth channel letters and boxes like 40-150mm)
- Indoor & Outdoor lighting decorations

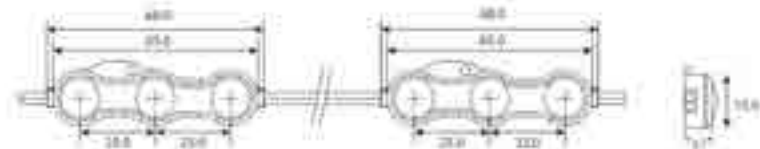
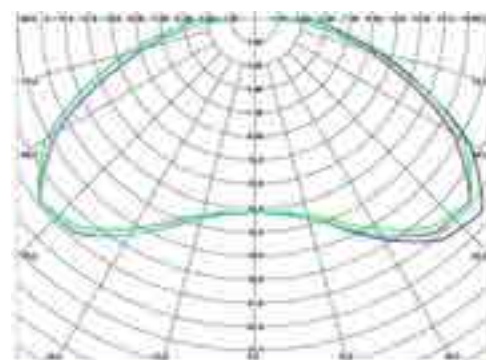
FICHA DE PRODUCTO

DTSA MODULO OZ3 IP67 CHIP SAMSUNG 1,14W/12V

Módulo 1OZ3U



Distribución de la luz
(1.44W, 114lm, 6500K)



Size: 68(L) x 15(W) x 8.1(H)mm / Distancia entre módulos: 148mm

CARACTERÍSTICAS

- SAMSUNG LED Chip
- Wide Beam Angle 160°
- Built in Lens type
- Long Life time (More than 50,000hrs at L70)
- Easy installation and maintenance
- 100% waterproof (IP68)
- Safety Operation with DC12V
- 5 years warranty
- White(3000K, 6500K, 10000K)

APLICACIONES

- Sign applications (smaller depth channel letters and boxes like 40~150mm)
- Indoor & Outdoor lighting decorations

PACKAGING

- 470m x 320mm x 530mm
- Weight: 17kg
- 1 rollo 50pcs/1 bolsa 100pcs
- Caja 200pcs
- Caja ext. 2.000pcs



ESPECIFICACIONES Operating Temp. :-30° ~+70°

Input Vol.	Beam Angle	Power Con.	Current	Lum Flux	Lum Efficacy	CCT	IP	CRI
12VDC	160°	0.72W	0.06A			ROJO	68	Ra80
12VDC	160°	0.72W	0.06A			AZUL	68	Ra80
12VDC	160°	0,72W	0.095A			VERDE	68	Ra80
12VDC	160°	1.14W	0.095A	100lm	85 lm/W	6000/3000K	68	Ra80

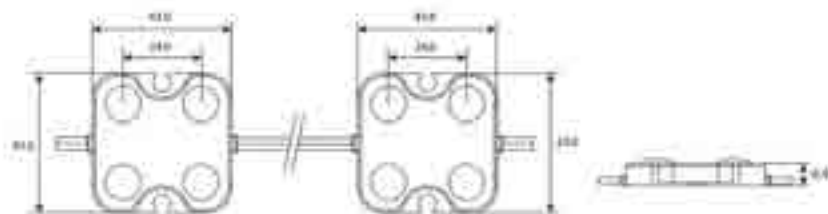
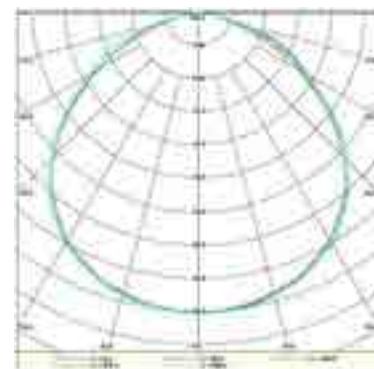
FICHA DE PRODUCTO

DTSA MODULO OZ4 IP67 CHIP SAMSUNG 1,44W/12V

Módulo Ref 1OZ4



Distribución de la luz
(1.44W, 115lm, 6500K)



Size: 43(L) x 43(W) x 8.4(H)mm / Distancia entre módulos: 146mm

CARACTERÍSTICAS

- SAMSUNG LED Chip
- Reverse Voltage Protection Circuit
- Wide Beam Angle 140°
- Built in Cover type
- Long Life time (More than 50,000hrs at L70)
- Easy installation and maintenance
- 100% waterproof (IP68)
- Safety Operation with DC12V
- 5 years warranty
- White(6500K, 10000K)

APLICACIONES

- Sign applications (Medium depth channel letters and boxes like 80~200mm)
- Iluminación para interior y exterior

PACKAGING

Size: 470mm x 320mm x 530mm
Weight: 21kg

- 1 rollo 50pcs
- Caja 100pcs
- Caja 1.000pcs



ESPECIFICACIONES

Operating Temp. :-30° ~+70°

Input Vol.	Beam Angle	Power Con.	Current	Lum. Flux	Lum. Efficacy	CCT	IP	CRI
12VDC	140°	1.44W	0.12A	115lm	80lm/W	3000K/6500K	68	Ra80°

FICHA DE PRODUCTO

DTSA PROYECTOR 30W USO EXTERIOR/INTERIOR COLORES 3000K Y 6000K.

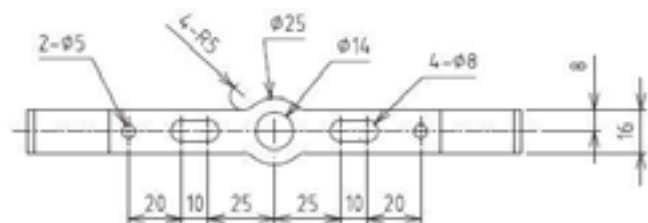
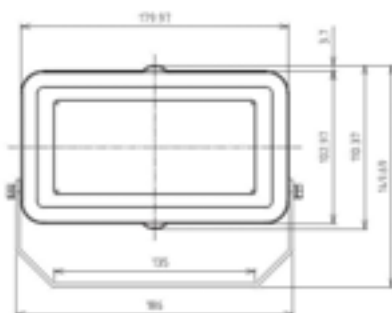


HFL-F02 (30W)



Special Lens (50x80) Applied

- 50°x80°**
Excellent Uniformity
- 230VAC**
(220-240VAC) input
- 0.8kg**
Lower weight
-
-
- 3 YEARS**
- IP66**



(Model No.)	Input Vol.	Power Con.	CCT	Beam angle	CRI	Lum. Flux	Lum. Efficacy	Packaging
HSL- F02 30W 6500K	230VAC	30W	6500K	50x80°	Ra80	2700 lm	90 lm/W	10pcs in one box

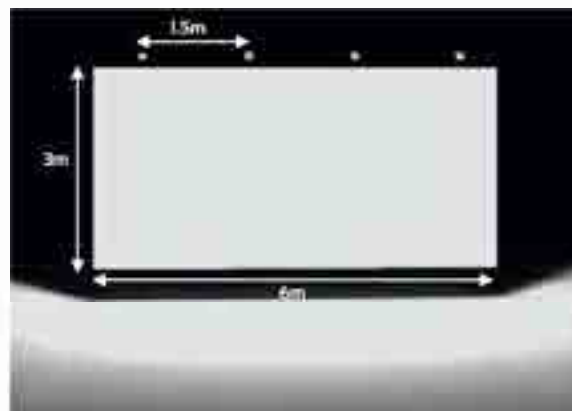
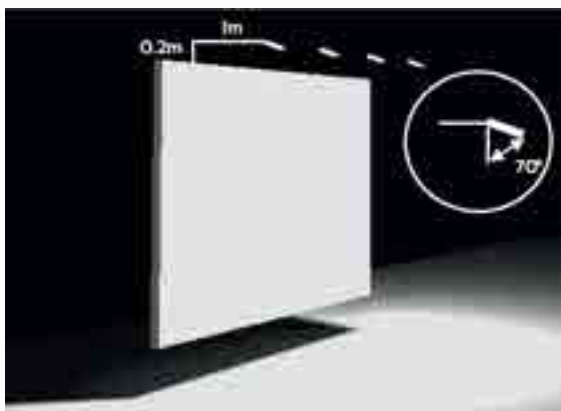
Operating Temp. : - 20°C~+40°C

FICHA DE PRODUCTO

DTSA PROYECTOR 30W SIMULACION CON LENTES

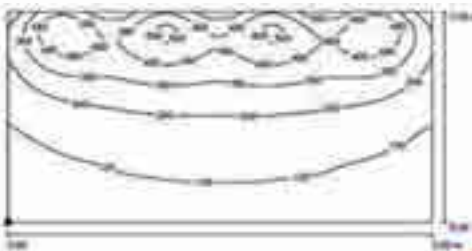
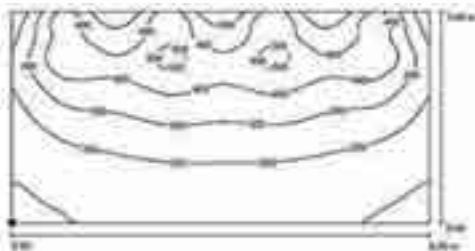
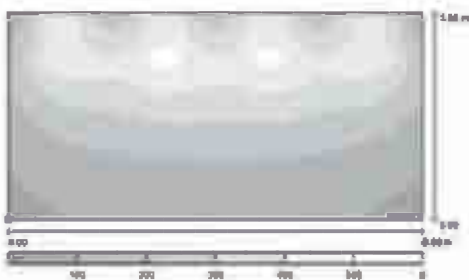
SIMULACIÓN

HFL-FO2 (30W)



Simulation Condition

- . Board size : 3m (H) x 6m(W)
- . Flood Light No. : 4pcs (1.5m distance between Flood Lights)



Model	Beam Angle	E _{min}	E _{max}	E _{avg}	U ₂ (E _{min} / E _{avg})
HSL FO2 30W	50 x 80°	73 lx	532 lx	272 lx	0.267
IV- 502 30W	110 °	58 lx	627 lx	255 lx	0.226



DTSA

leds / iluminación

Pol. de Raos 11 · parcela F13 · 39600 Camargo · Cantabria · España
Tel. +34 942 356 072 · Fax. 942 369 456
www.dtsa.es